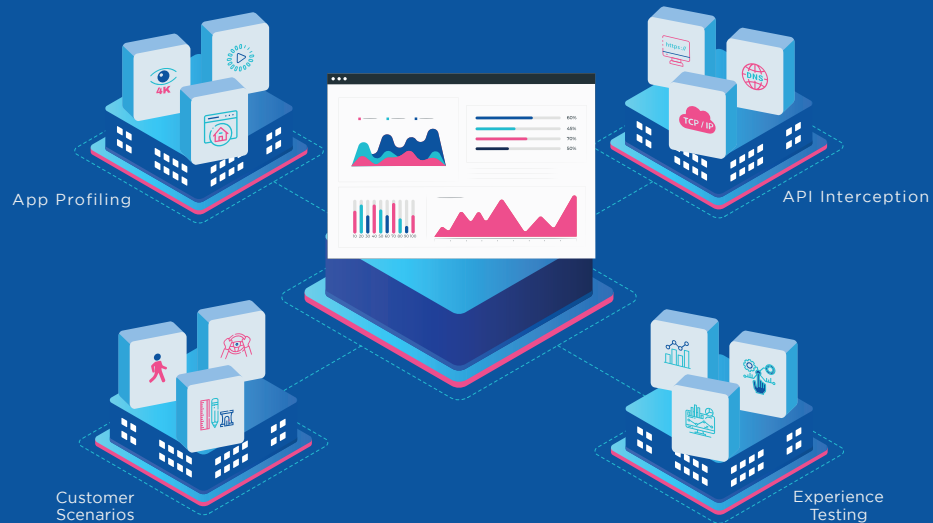


# App Experience

## Synthetic Experience Monitoring

Even small lags can lead to abandonments. Monitor your app's performance in real time and detect customer issues pro-actively.



### Real Time Experience Monitoring



True user experience at your fingertips

Identify critical user journeys across 30+ locations on the device and network of your choice.

Measure user experience without SDK integration or source code change. Thus, you can save valuable dev bandwidth.

Easy to setup. You can start monitoring in just a few hours!

View the network call sequence between app and backend with our unique waterfall charts. Easily identify slow backend servers slowing your app down.

Monitor your CDN performance and integrate with your load balancer to build an experience led multi-CDN strategy.

Identify slowing 3rd party SDKs, parallelize your network calls, and remove unused network resources that are leading to latencies.

### In-Depth Diagnostics



Pinpoint actions to improve your app performance

### App Barometer



Benchmark your App against competitors

Audit the experience across critical user journeys on your app against that of your peers.

Compare on 150+ pre-set KPIs or define your own KPIs to compare in custom scenarios.

Customize the dashboards without changing the code. Integrate with external tools such as Grafana to get a detailed view.

**Get your App's User Experience Measured today.**

**Enquire Now**

# App Functional

## Automated Functional Testing

Fixing bugs in an app can be expensive and time taking post-launch. Automate your functional testing process to shorten release cycles and ensure a bug-free release.



### Cross Platform Continuous Testing



Run automated tests across 200+ device models

Get exclusive access to more than 200+ device make and models on both android and iOS.

Setup hybrid test infrastructures by combining shared device clouds (e.g. Browserstack) with your private device lab.

Test on the framework and language of your choice. Choose from frameworks such as Appium, UIAutomator, XCTest UI, and Robot and languages such as Java, Python, and Node JS.

View the success rate of test cases across builds, devices, OS, testers/developers, and date-time.

Deep dive into failed tests by inspecting video, logs, and screenshots and review by time stamp.

Get CPU, Memory, Graphic and Network logs for root cause analysis of your app issues.

### Integrated Test Analytics



Comprehensive reporting of your test results

### Unlimited Parallelism



No charges by parallel test runs

Automated testing must be continuous and "parallel" slot based pricing limits the ability to run tests continuously

Hence, we never charge by parallel test runs. Run tests as many times as is necessary

Schedule tests so that you don't have to worry about running it every time

**Automate your app's testing cycle to release bug-free versions of your app at lightning speed.**

[Enquire Now](#)

# App Interact

## Live Performance Testing

Interact in real-time with a device of your choice and profile the app footprint on CPU, Memory, Battery and your app's graphics performance.



### Live Testing



Interact with devices in real-time

Access mobile and non-mobile devices (Apple TV, firestick, Roku) in 30+ global locations to test user journeys at ultra-low latency.

Replicate real user actions such as swipe, pinch, volume control, camera, toggle Bluetooth, and restart device.

Access devices connected to over 100+ real cellular networks and thus, replicate real user scenarios.

Track your app's footprint on CPU, Memory and Battery utilization for various user journeys.

Get in-depth analysis of your app's graphics performance with metrics such as frame drops and slow frame refresh rate.

Record your session and share with your team for debugging.

### Resource Profiling



Optimize your app's footprint

### API Interception



Tap into your App's client-server interactions

Inspect the API request-response for both native and web-apps. Scrutinize calls made from the client app to debug functional issues.

Filter results to get root causes like HTTP errors, high wait time, high handshake times, and non-optimized asset size and formats.

Intercept APIs to modify either the request or the response. Non-intrusively test whether modifications are resolving the bug.

**Diagnose the Performance of your App to detect even the smallest bugs.**

[Enquire Now](#)