

BEVYWISE IOT PLATFORM

Collect, Monitor, Aggregate, Analyze,
Transform, Visualize, Multi Tenant,
Manage Customers, White Label , on
Premise / On Cloud.



A highly Versatile, Extendable & Complete server side platform that enables Solution providers to deploy IOT / IIoT Solution for any commercial / industrial use cases. Get your data collection to Analysis to Visualization done within a single framework.

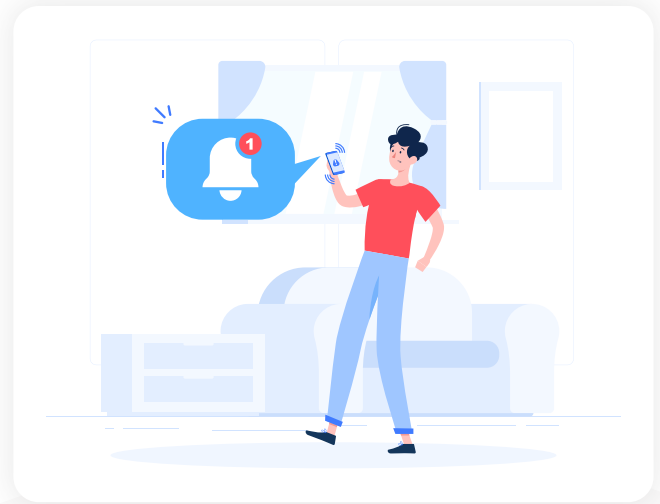
Build Solution for Multiple Users in One Go



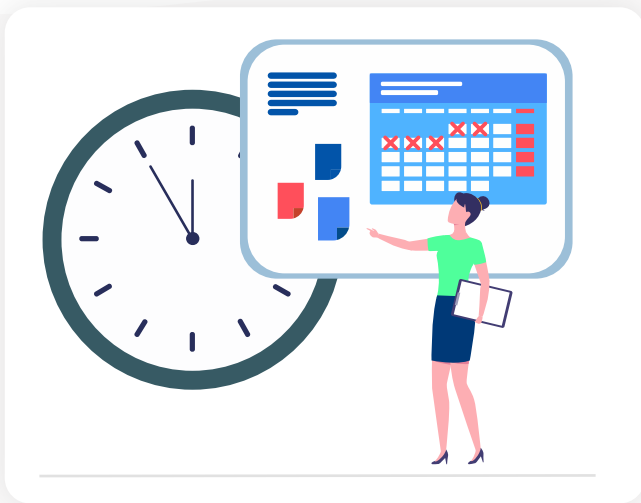
Each Tenant can have

- ✓ Custom Dashboards
- ✓ 10+ Live Widgets
- ✓ Reports & History Graphs
- ✓ User hierarchy & Roles

- ✓ Device Groups & Permissions
- ✓ Event & Time based Rules
- ✓ Alerts & Notification on Mobile, Web UI , Email
- ✓ Configurable M2M Communicaiton



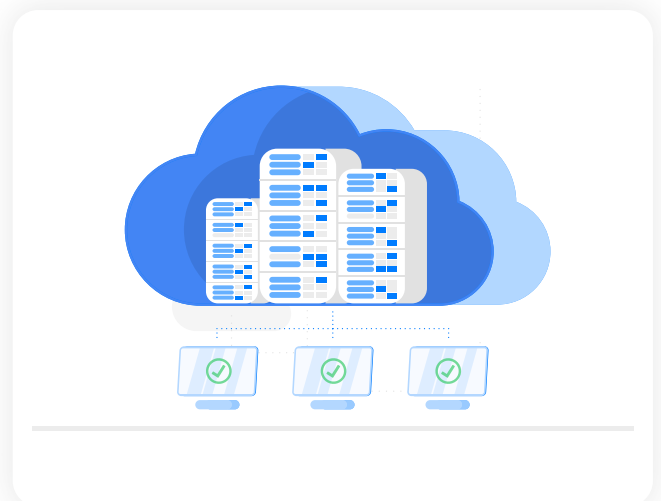
Administrator Console



- ✓ Manage Tenants
- ✓ Deploy customization for tenants
- ✓ Enable / Disable Tenants Devices
- ✓ Deploy Rules for Tenants

Data Administration & Analysis

- ✓ Stored in Relation DB & Big Data Engine
- ✓ Deploy Custom AI / ML algorithm
- ✓ Granular data export of device or particular parameter.
- ✓ Data back on regular intervals
- ✓ Back up to your cloud storage





Connect & Collect



Connect any device / gateway



Control each device behind the gateway.



Support for MQTT & MQTT-SN



Device Authentication



Secure connection using SSL / TLS

Extend IOT Platform



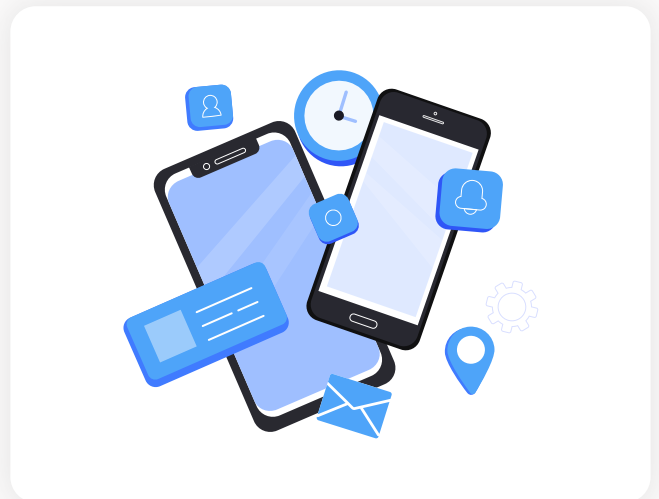
Build Mobile Applications



Integrate using REST API



Deploy Custom Modules



Deployment & Monitoring



Micro services architecture



Host on premise or on private cloud



White label



Monitoring & Self healing module



System health alert on Telegram & Mail

System Requirements - Minimum

- ✓ Ubuntu 16
- ✓ 8 CPU & 16 GB RAM
- ✓ Domain Name to map
(for public hosting)
- ✓ A Static IP for on premise hosting



Our Customer Testimonials

" The key aspect of the decision to use Bevywise as the solution provider for our needs is definitely the customer oriented approach they have. A direct conversation with a knowledgeable manager rather than deferring to a sales person or an automated commuter is definitely an important feature for us. This along with the continued support and collaborative interaction of their team is what sets Bevywise apart from the rest of providers screened before "



E. Zamora,
CEO, Versatron Smart Networks

About

Bevywise Networks is a IoT Company providing end to end solution to enable enterprises, developers & Consultants to collect and analyse data and take smarter decisions. Our tools help customers do capacity & Performance planning.



Bangalore, India
DERBI Foundation, 2nd Floor, A Block ,
Dayananda Sagar University Innovation Campus
Near KudluGate, Hosur Road
Bangalore-560068



+1 (707) 670 3030



support@bevywise.com



www.bevywise.com