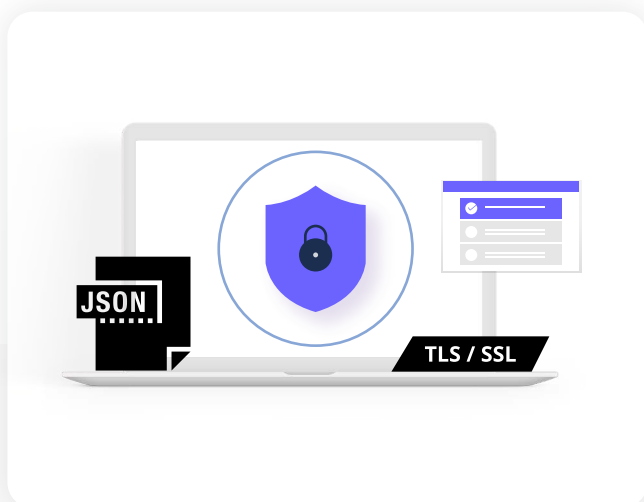


IOT SIMULATOR

Comprehensive tool to develop, test & demo real time IOT application and IoT devices in a Simple and easy way



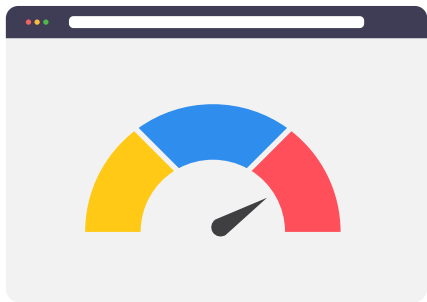
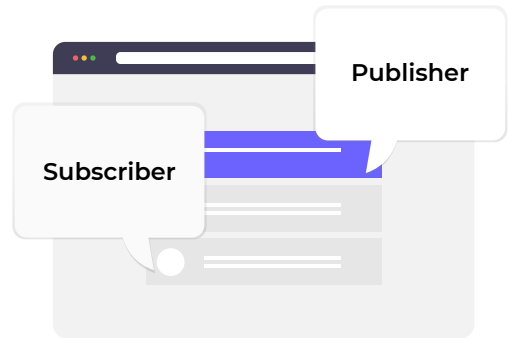
Enables you to test Azure , AWS IOT , Google IOT Core , Bevywise IOT Platform & all standard MQTT Implementations.



Functional Testing

- ✓ Simple Text & Complex JSON Pay Load
- ✓ Flexible Event Triggers
- ✓ Device Authentication
- ✓ SSL / TLS Support

- ✓ Subscription & Messaging
- ✓ Behavior Simulation with Device Response
- ✓ Complete MQTT v 3.1 & 3.1.1 Support

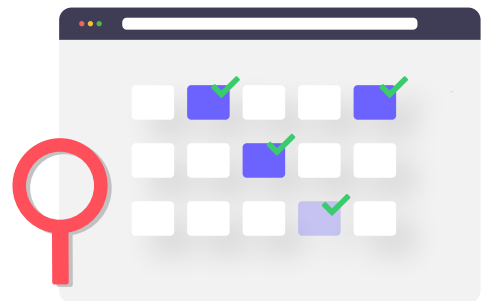


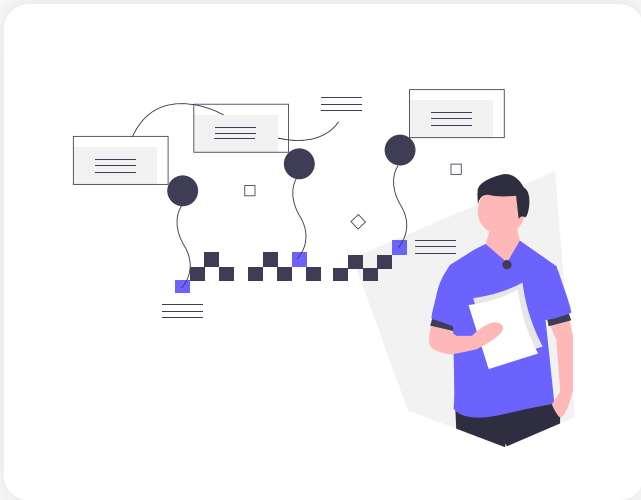
Load Testing

- ✓ Continuous Burst of data
- ✓ Simulate Large Payload
- ✓ Simulate Large Networks.

Advanced Testing

- ✓ Protocol / Packet Error Simulation
- ✓ Device Availability Simulation
- ✓ Python Interceptor for device behavior





Demonstration



Simulate device for any industry.



Carry you lap to the Trade Show.



Start / Stop Device for the Demo.

Ease of Use



Easy to use Browser interface



Reusable Templates



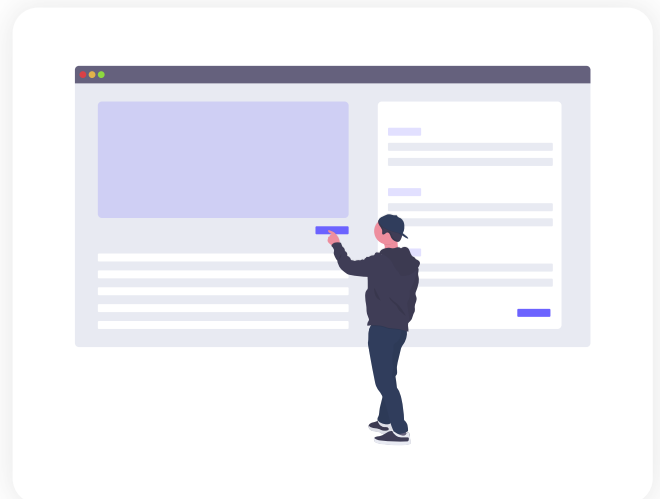
Save multiple Networks and reuse



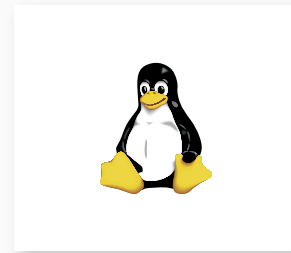
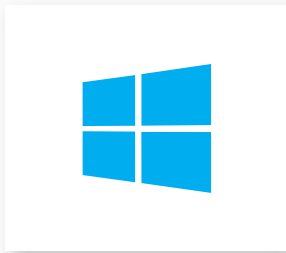
Bulk Creation of Devices



Event / Command Log



Runs on



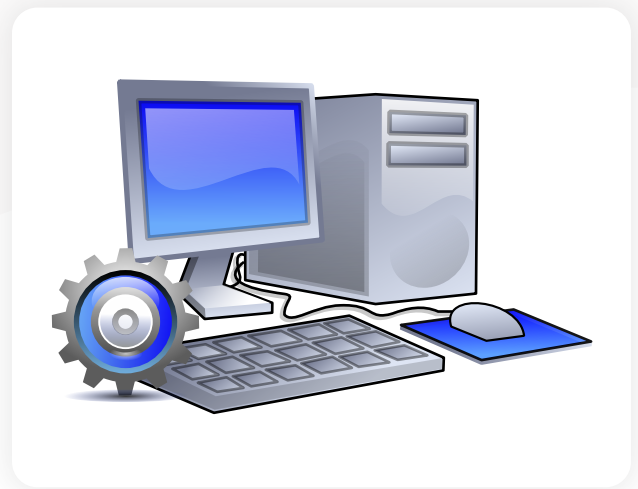
Minimum requirement



2 CPU,



4 GB RAM.



About

Bevywise Networks is a IoT Company providing end to end solution to enable enterprises, developers & Consultants to collect and analyse data and take smarter decisions. Our tools help customers do capacity & Performance planning.



Bangalore, India
DERBI Foundation, 2nd Floor, A Block ,
Dayananda Sagar University Innovation Campus
Near KudluGate, Hosur Road
Bangalore-560068



+91 98407 87678



support@bevywise.com



www.bevywise.com